

Bubble Bracelet

By TrendSetter Melissa Grakowsky Shippee
and Melissa Mauk Rodarte

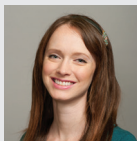
Copyright 2017 © Starman, Inc. & Artist. Not licensed for digital distribution.
Promotional use only—no resale of instructions permitted. Version 1.3

STARMAN
TRENDSETTERS



PERFECTLY PAIR CZECHMATES® BEAMS™ AND CABOCHONS

This quick-and-easy bracelet, designed by two TrendSetters with CzechMates® Beams and Cabochons, makes a perfect gift.



MELISSA GRAKOWSKY-SHIPPEE

Artist in Love With The Experimentation of Design With Beads

Visit www.MGSDesigns.net



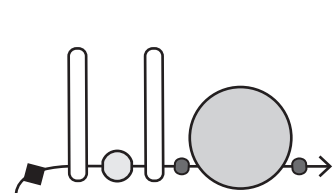
MELISSA MAUK-RODARTE

Designer/Partner at the Freckled Pear and Professional Bead Wrangler

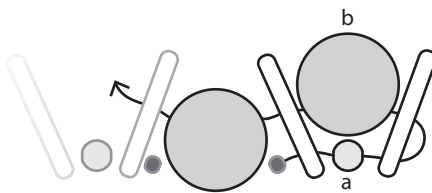
Visit www.TheFreckledPear.com

PROMOTIONAL HOLIDAY COLORWAY: CzechMates Beams ColorTrends Saturated Metallic Airy Blue (397-210-77046); CzechMates Cabochons ColorTrends Saturated Metallic Hazelnut (396-06-77056); Rounds 2mm ColorTrends Saturated Metallic Island Paradise (5-02-77060); TOHO Rounds 15° Silver-Lined Frosted Crystal (TR-15-21F).

INSTRUCTIONS



Step 1



Step 2

1. Add a stop bead to 2yd of thread, leaving a 6" tail. Add CB-Right, R, CB-Right, TR, CC-Right, TR; repeat eight times.

2. a) Add CB-Right, R, CB-Right, then jump to the center hole of the last CB added.

b) Add CC-Left, then pass through the center hole of the next CB, the open hole of the next CC, and the center hole of the next CB; repeat eight times.

3. a) Add CC-Left; pass through the center hole of the next CB. Jump to the open hole of the same CB.

b) Add TR; pass through the open hole of the next CC. Add TR; pass through the open hole of the next CB. Add R; pass through the open hole of the next CB. Repeat this step eight times.

4. a) Add TR; pass through the open hole of the next CC. Add TR; pass through the open hole of the next CB. Remove the stop bead and tie off the tail thread.

b) Add seven TR; pass back through the right hole of the same CB and the next R, CB-Right, TR.

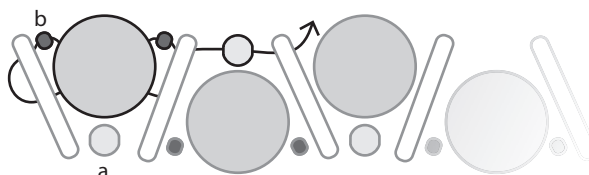
c) Add seven TR and pass back through the next TR, CB-Right, R, CB-Right, TR; repeat seven times. Note: A shorter segment of the bracelet is shown for illustration clarity.

d) Add seven TR; pass back through the next TR, CB-Right, R, CB-Right. Add seven TR; pass through the left hole of the same CB and the next TR.

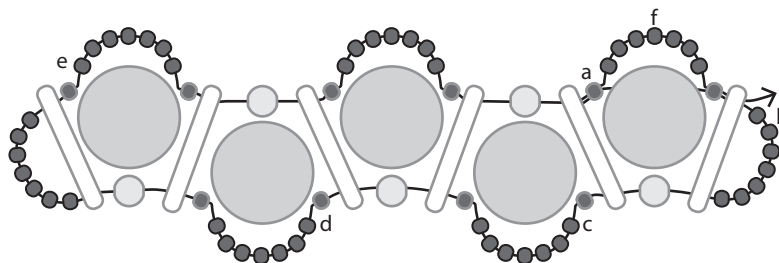
e) Repeat Step 4c along the top edge of the bracelet, this time repeating the sequence nine times.

f) Add seven TR and pass through next TR, CB-Left.

Repeat the thread path of this step for strength before tying off. Attach the clasp to the seed bead loops at the ends using jump rings (not shown).



Step 3



Step 4

MATERIALS

- 20 CzechMates® Beams (CB)
- 19 CzechMates® 7mm Cabochons (CC)
- 19 Rounds, 2mm (R)
- 1g TOHO 15° Rounds (TR)
- 2 Jump Rings, 6mm
- TOHO One-G Thread
- Clasp of Choice

Bracelet as instructed measures approx. 6 3/8" before clasp. Each Step 1 repeat adds approx. 5/8".

